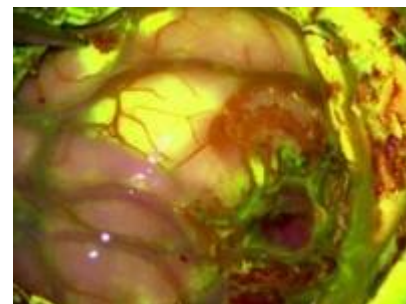


YELLOW 560



YELLOW 560 nm [surgical microscope](#) filter

YELLOW 560 from ZEISS – Fluorescence-based visualization*

Visualizes fluorescent dyes in the wavelength range from 540 to 690 nm for additional fields of applications. YELLOW 560 from ZEISS highlights the fluorescence-stained structures while viewing non-stained tissue in natural-like color.

Supports working under fluorescence light

Supports fluorescence staining levels

Unique filter highlighting only the fluorescent signal while retaining surrounding structures in natural-like color (HILITE technology)

The module is completely integrated within the ZEISS KINEVO® 900 system with no external cables or components. This supports the free-floating maneuverability of the surgical microscope.

ZEISS YELLOW 560 allows research activities with suitable fluorescence dyes.

see [Fluorescein sodium guided resection for pituitary neuroendocrine tumor](#).

From:

<https://neurosurgerywiki.com/wiki/> - **Neurosurgery Wiki**

Permanent link:

https://neurosurgerywiki.com/wiki/doku.php?id=yellow_560

Last update: **2024/06/07 02:57**

