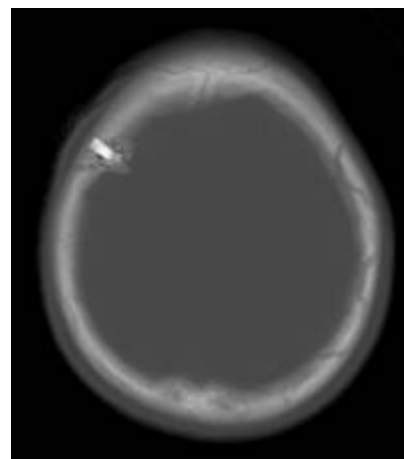


Stab wound

A stab **wound** is a specific form of **penetrating intracranial injury** that results from a knife or a similar pointed object that is “deeper than it is wide”.



While typically stab wounds are thought only to be caused only by knives, they can also occur from ice picks, pens, broken bottles, and even coat hangers. Most stabbings occur because of intentional violence or through self infliction.

The treatment is dependent on many different variables such as the anatomical location and the severity of the injury. Even though stab wounds are inflicted at a much greater rate than gun shot wounds, they account for less than 10% of all penetrating trauma deaths.

Penetrating head injuries due to the use of screwdrivers as wounding agents in acts of interpersonal violence seldom occur.

A number of studies were reviewed to investigate the incidence, distribution, common findings, mechanism of injury, differential diagnostic criteria, complications, treatment, and prognosis of craniocerebral screwdriver stab injuries. It was observed that the degree of traumatic severity depends on the cross-sectional area of the screwdriver and the anatomical region of injury. Craniocerebral screwdriver injuries are mainly cases of interpersonal violence and the mortality rate is approximately 47.6%. In 23.8% of the incidents, the trauma is overlooked on admission because of the small entry wound and, thus, the severity of the injury is not initially appreciated ¹⁾.

¹⁾

Pavlidis P, Karakasi MV, Birbilis TA. Traumatic Brain Injury Due to Screwdriver Assaults: Literature Review and Case Report. Am J Forensic Med Pathol. 2016 Aug 26. [Epub ahead of print] PubMed PMID: 27571172.

From:
<https://neurosurgerywiki.com/wiki/> - **Neurosurgery Wiki**

Permanent link:
https://neurosurgerywiki.com/wiki/doku.php?id=stab_wound

Last update: **2024/06/07 02:59**

