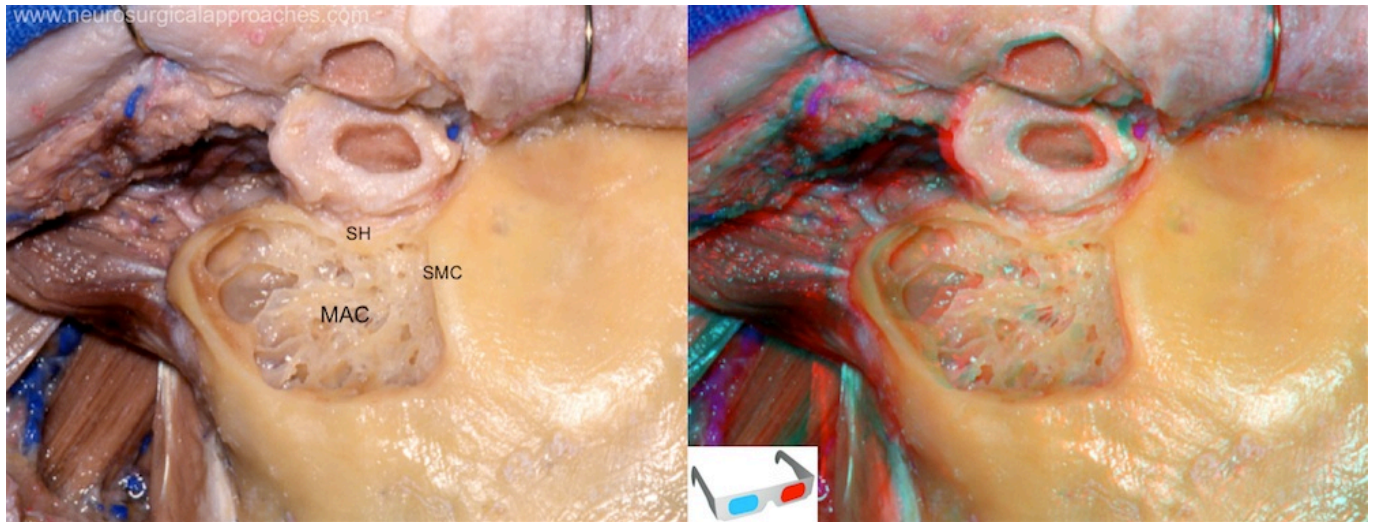


Spine of Henle

The inner end of the external acoustic meatus is closed, in the recent state, by the tympanic membrane; the upper limit of its outer orifice is formed by the posterior root of the zygomatic process, immediately below which there is sometimes seen a small spine, the suprameatal spine also called the spine of Henle, situated at the upper and posterior part of the orifice.



MAC: mastoid air cells; SH: spine of Henle; SMC: suprameatal crest.

From:

<https://neurosurgerywiki.com/wiki/> - **Neurosurgery Wiki**

Permanent link:

https://neurosurgerywiki.com/wiki/doku.php?id=spine_of_henle

Last update: **2024/06/07 02:57**

