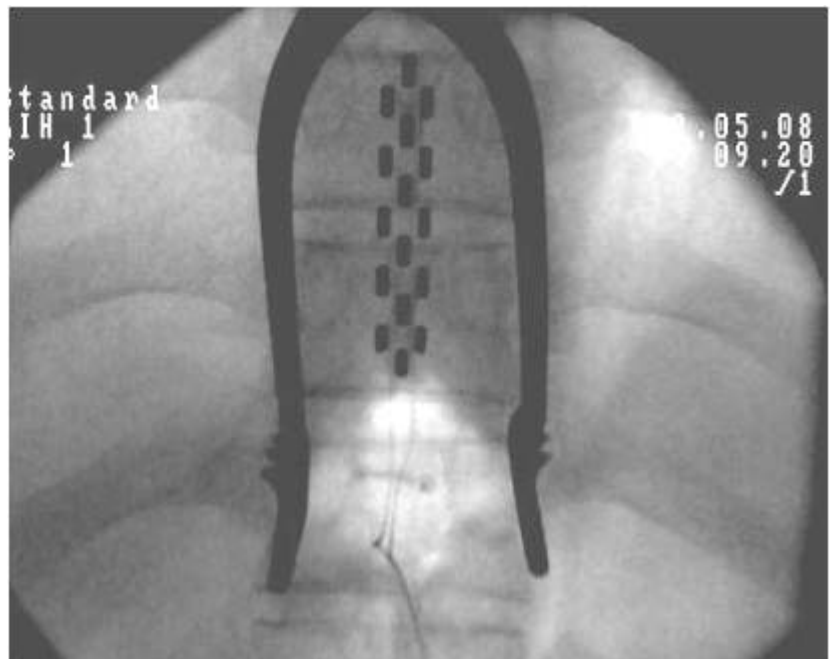


# Paddle lead



Thoracic [radiculopathy](#) has been reported as a [complication](#) of [spinal cord stimulation](#) (SCS) [paddle lead](#) implantation by several authors and commonly presents as [abdominal pain](#).

Lee et al., from the [Houston Methodist Hospital](#) performed a search of all patients who underwent either placement of a new epidural paddle lead electrode or revision of an [epidural](#) paddle lead electrode for SCS in the [thoracic region](#) from January 2017 to January 2018. They then investigated all cases of immediate postoperative abdominal pain.

They identified 7 patients who had immediate postoperative abdominal pain among 86 cases of epidural SCS procedures. Most patients were discharged on postoperative days 1-3. No patients required [revisions](#) or removals of their SCS for any reason.

They conclude that the [etiology](#) of immediate postoperative abdominal pain after thoracic paddle lead implantation for SCS is most likely [thoracic radiculopathy](#). They hypothesized that small, transient [epidural hematomas](#) could be the cause of this thoracic radiculopathy. They argue that all patients with immediate postoperative abdominal pain and no other neurologic deficits after thoracic paddle lead implantation for SCS should first be treated conservatively with [observation](#) and [pain](#) management <sup>1)</sup>.

<sup>1)</sup>

Lee JJ, Sadrameli SS, Desai VR, Austerman RJ, Leonard DM, Dalm BD. Immediate Abdominal Pain after Placement of Thoracic Paddle Leads for Spinal Cord Stimulation: A Case Series. *Stereotact Funct Neurosurg*. 2019 Jan 3;1-6. doi: 10.1159/000495415. [Epub ahead of print] PubMed PMID: 30605913.

From:  
<https://neurosurgerywiki.com/wiki/> - **Neurosurgery Wiki**

Permanent link:  
[https://neurosurgerywiki.com/wiki/doku.php?id=paddle\\_lead](https://neurosurgerywiki.com/wiki/doku.php?id=paddle_lead)

Last update: **2024/06/07 03:00**



