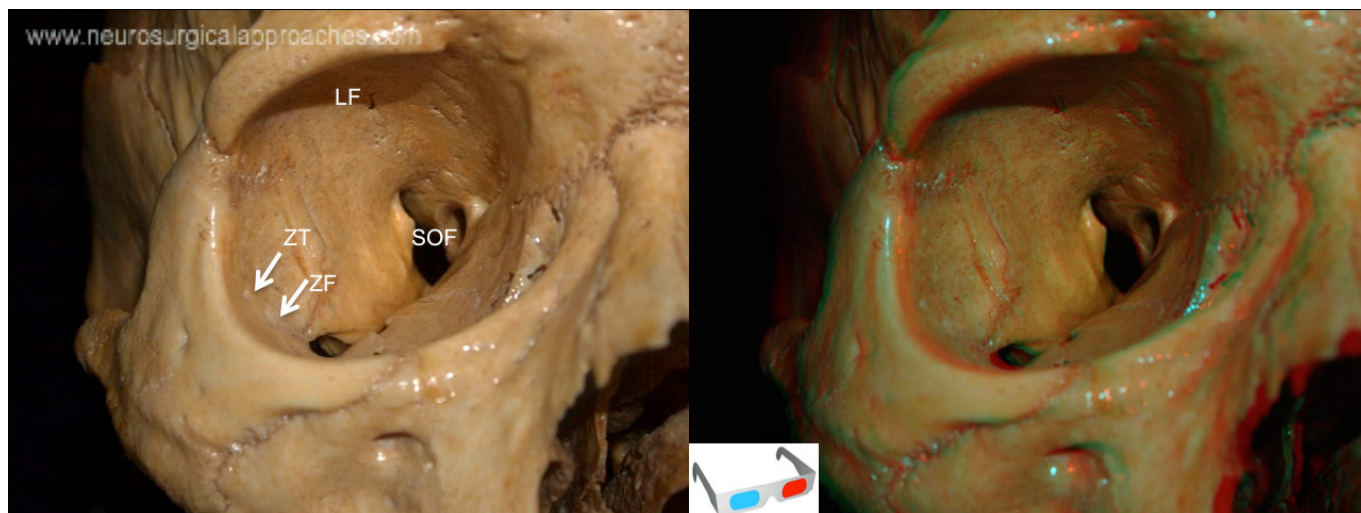


Orbital lateral wall



<http://www.3dneuroanatomy.com/wp-content/uploads/2014/12/orb4.jpg>

The lateral wall consists predominantly of the **greater wing of the sphenoid bone** and the frontal process of the zygomatic bone. Superiorly, the anterior part of the lateral orbital wall is continuous with the roof, but the posterior part of the lateral wall is separated from the roof by the superior orbital fissure (SOF). The **lacrimal foramen** (LF), which transmits the recurrent meningeal branch of the ophthalmic artery, is located anterior to the superior orbital fissure along the superior edge of the lateral wall. On the anterolateral part of the intraorbital surface of the lateral wall are the zygomaticofacial (ZF) and zygomaticotemporal (ZT) foramina crossed by the zygomaticofacial and zygomaticotemporal nerves, which exit the external surface of the zygoma to reach the skin of the cheek and temple.

From:

<https://neurosurgerywiki.com/wiki/> - **Neurosurgery Wiki**

Permanent link:

https://neurosurgerywiki.com/wiki/doku.php?id=orbital_lateral_wall

Last update: **2024/06/07 02:50**

