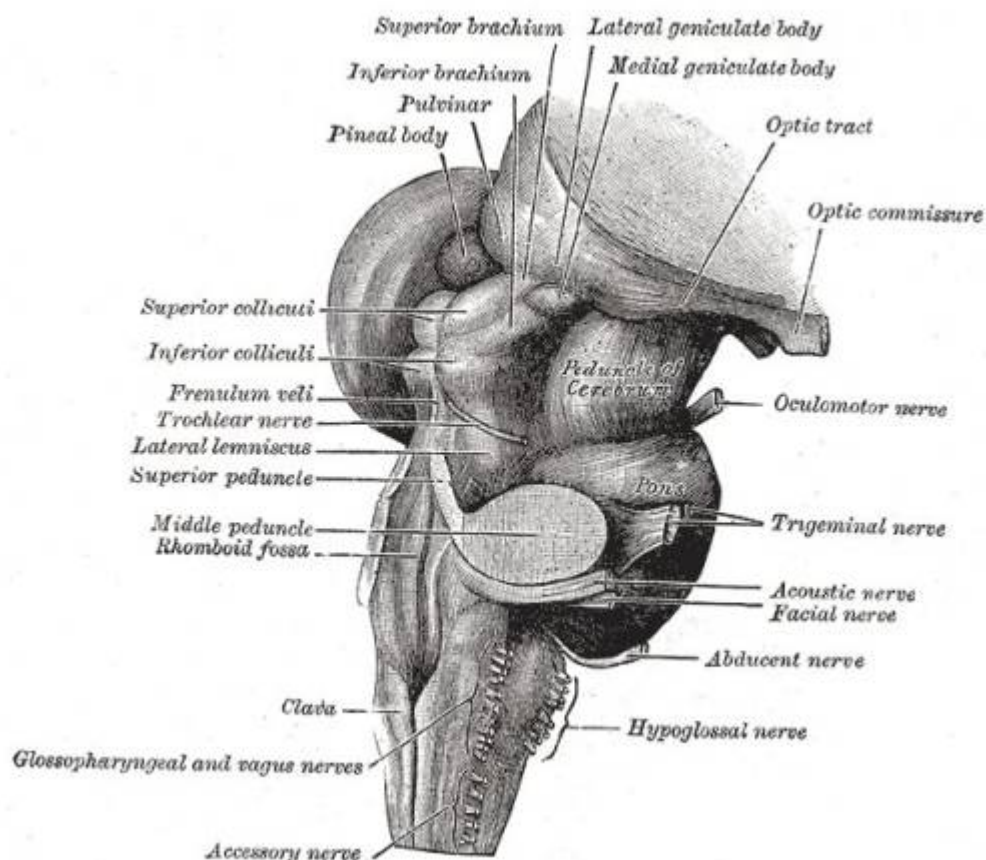


# Medial geniculate nucleus



The medial geniculate nucleus (MGN) or medial geniculate body (MGB) is part of the auditory thalamus and represents the thalamic relay between the [inferior colliculus](#) (IC) and the [auditory cortex](#) (AC). It is made up of a number of sub-nuclei that are distinguished by their neuronal morphology and density, by their afferent and efferent connections, and by the coding properties of their [neurons](#). It is thought that the MGB influences the direction and maintenance of attention.

From:

<https://neurosurgerywiki.com/wiki/> - **Neurosurgery Wiki**

Permanent link:

[https://neurosurgerywiki.com/wiki/doku.php?id=medial\\_geniculate\\_nucleus](https://neurosurgerywiki.com/wiki/doku.php?id=medial_geniculate_nucleus)

Last update: **2024/06/07 02:52**

