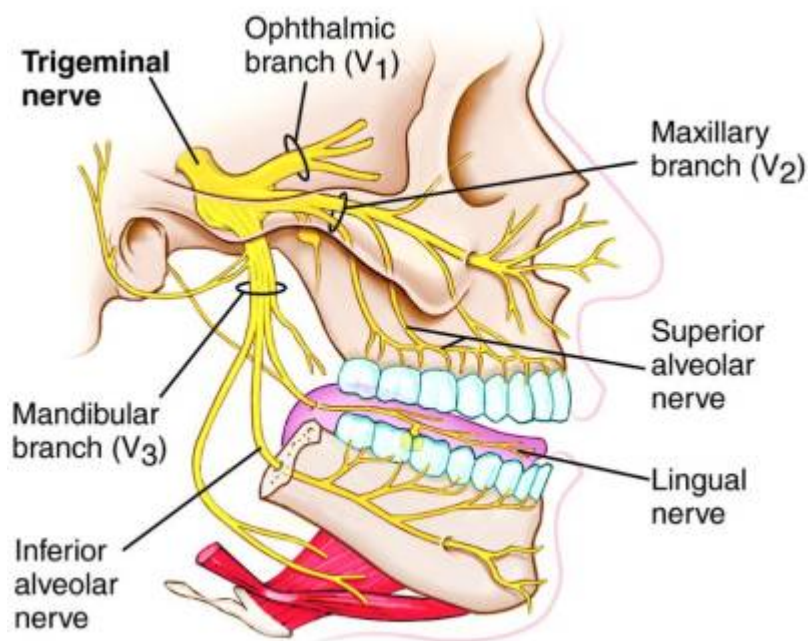


Maxillary nerve



The maxillary nerve (CN V2) is one of the three branches or divisions of the [trigeminal nerve](#).

Function

It comprises the principal functions of sensation from the maxillary, nasal cavity, sinuses, the palate and subsequently that of the mid-face, and is intermediate, both in position and size, between the ophthalmic nerve and the mandibular nerve.

Its function is the transmission of sensory fibers from the maxillary teeth, the skin between the palpebral fissure and the mouth, and from the nasal cavity and sinuses.

The maxillary division runs through the [foramen rotundum](#) located just below the inferior aspect of the [superior orbital fissure](#), which transmits the ophthalmic division.

From:

<https://neurosurgerywiki.com/wiki/> - **Neurosurgery Wiki**

Permanent link:

https://neurosurgerywiki.com/wiki/doku.php?id=maxillary_nerve

Last update: **2025/04/29 20:30**

