

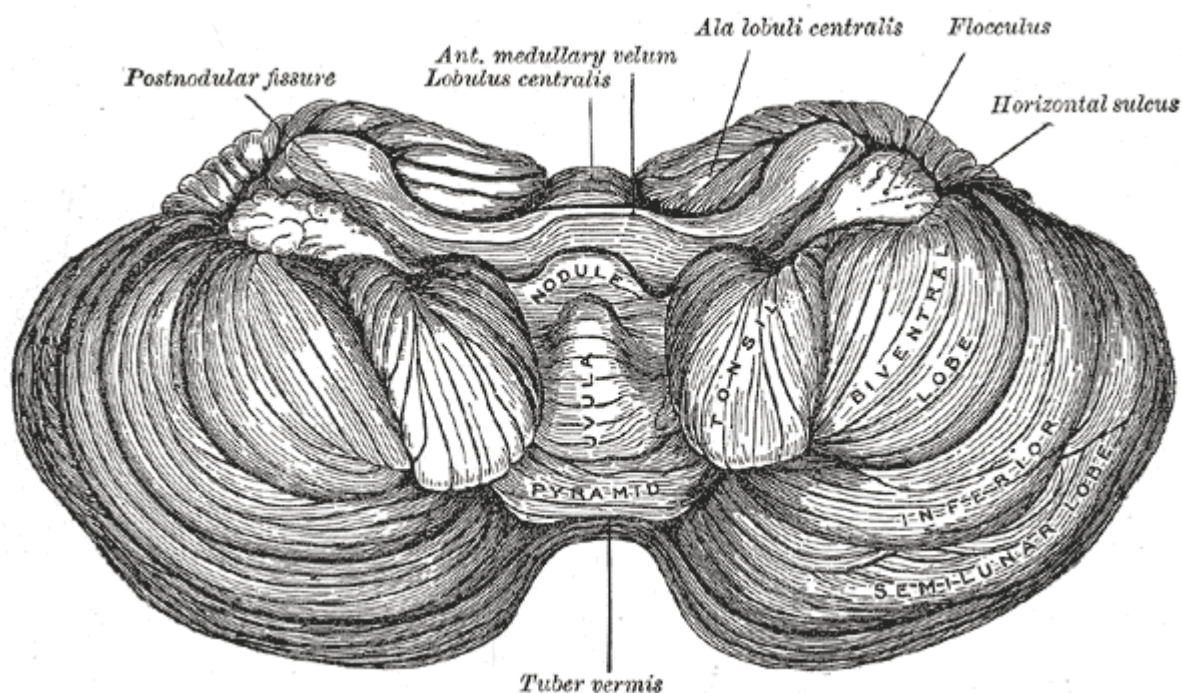
Flocculus

The flocculus (Latin: tuft of wool, diminutive) is a small lobe of the cerebellum at the posterior border of the middle cerebellar peduncle anterior to the [biventer lobule](#). Like

other parts of the cerebellum, the flocculus is involved in motor control. It is an essential part of the vestibulo-ocular reflex, and aids in the learning of basic motor skills in the brain.

It is associated with the nodulus of the vermis; together, these two structures compose the vestibular part of the cerebellum.

At its base, the flocculus receives input from the inner ear's vestibular system and regulates balance. Many floccular projections connect to the motor nuclei involved in control of eye movement.



From:

<https://neurosurgerywiki.com/wiki/> - Neurosurgery Wiki

Permanent link:

<https://neurosurgerywiki.com/wiki/doku.php?id=flocculus>

Last update: **2024/06/07 02:59**

