

Dumbbell spinal schwannoma

Latest Pubmed articles in real time

- [Ultrasonography diagnosis of dumbbell-shaped C5 cervical schwannoma: a case report and literature review](#)
 - [Atypical presentations and neurosurgical Synergy in the treatment of paravertebral tumors in children: Lessons from a single institution](#)
 - [The far lateral approach for microsurgical management of dumbbell C2 schwannomas](#)
 - [Assessing Surgical Approaches and Postoperative Complications for Thoracic Schwannomas: A Multicenter Retrospective Observational Analysis of 106 Cases](#)
 - [A rare case of dumbbell shaped ancient schwannoma found inside thoracic spine in a psychologically challenged patient](#)
 - [Schwannoma with uncharacteristic rapid growth and high Ki-67 index: illustrative case](#)
 - [Cerebrospinal fluid leakage complicated by intracranial hematoma and cervical infection following resection of dumbbell schwannoma in the cervical canal: a case report and literature review](#)
 - [Minimally Destabilizing Corridor for Resection of Dumbbell Nerve Sheath Tumors: A Novel Surgical Technique](#)
-
-

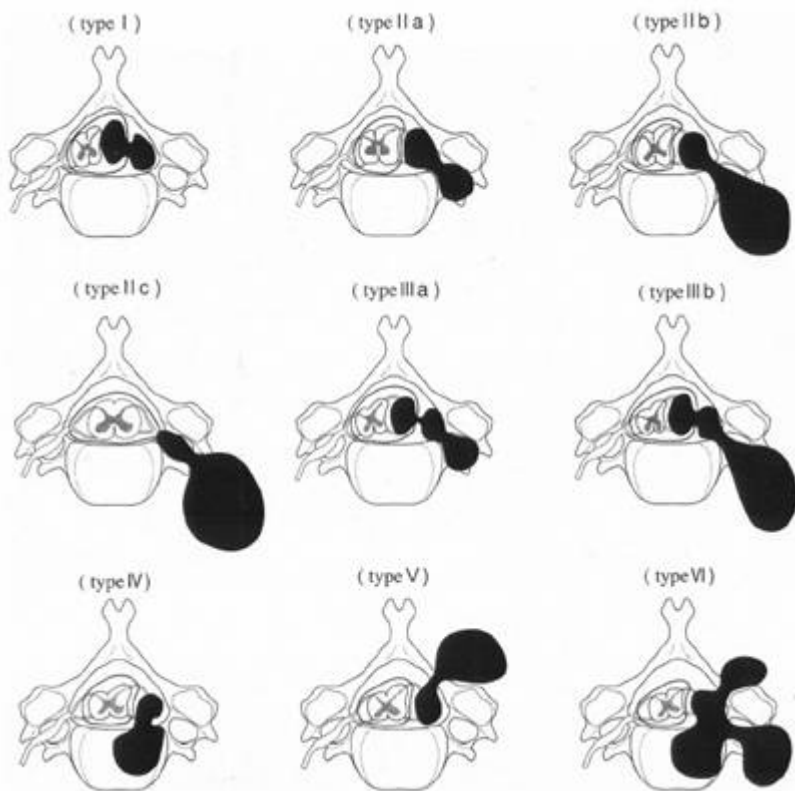
Dumbbell [spinal schwannoma](#) is a [dumbbell spinal tumor](#).

Classification

see [Cervical Dumbbell-Shaped Schwannoma](#).

Asazuma et al. ¹⁾ devised a schwannoma classification system for cervical dumbbell- shaped tumors that consisted of nine categories. An important drawback of their classification system is that it cannot be used for thoracic or lumbar schwannomas, which are as common as cervical schwannomas.

Asazuma et al. classification system for [dumbbell spinal schwannoma](#):



Type 1 intradural extradural restricted to the spinal canal. The constriction occurs at the dura.

Type II are all extradural, and are subclassified as:

IIa do not expand beyond the neural foramen.

IIb inside spinal canal + paravertebral.

IIc foraminal + paravertebral.

Type IIIa are intradural and extradural foraminal, IIIb are intradural and extradural paravertebral.

Type IV are extradural and intravertebral.

Type V are extradural and extralaminar with laminar invasion.

Type VI show multidirectional bone erosion.

Craniocaudal spread: IF & TF designate the number of intervertebral foramina and transverse foramina involved, respectively (e.g. IF stage 2 = 2 foramens).

Schwannomas involving C1 & C2: May involve vertebral arteries and require additional caution.

1)

Asazuma T, Toyama Y, Maruiwa H, Fujimura Y, Hirabayashi K. Surgical strategy for cervical dumbbell tumors based on a three-dimensional classification. *Spine* (2004) 29:E10-4.

doi:10.1097/01.BRS.0000103662.13689.76

From:

<https://neurosurgerywiki.com/wiki/> - **Neurosurgery Wiki**

Permanent link:

https://neurosurgerywiki.com/wiki/doku.php?id=dumbbell_spinal_schwannoma

Last update: **2024/06/07 02:50**

