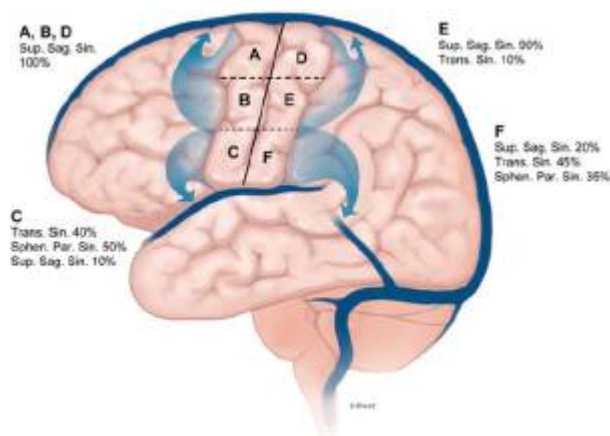


Central lobe

The central lobe consists of the **precentral gyrus** and **postcentral gyrus** on the lateral surface and the **paracentral lobule** on the medial surface and corresponds to the **sensorimotor cortex**.



The **coronal suture** is closer to the precentral gyrus and **central sulcus** at its lower rather than at its upper end, but they are closest at a point near where the superior temporal line crosses the coronal suture. The arterial supply of the lower two-thirds of the lateral surface of the central lobe was from the central, precentral, and anterior parietal branches that arose predominantly from the superior trunk of the **middle cerebral artery**. The medial surface and the superior third of the lateral surface were supplied by the posterior interior frontal, paracentral, and superior parietal branches of the **pericallosal artery** and **callosomarginal artery**. The venous drainage of the superior two-thirds of the lateral surface and the central lobe on the medial surface was predominantly through the **superior sagittal sinus**, and the inferior third of the lateral surface was predominantly through the superficial sylvian veins to the **sphenoparietal sinus** or the **vein of Labbé** to the **transverse sinus**.

The pre- and postcentral gyri and paracentral lobule have a morphological and functional anatomy that differentiates them from the remainder of their respective lobes and are considered by many as a single lobe. An understanding of the anatomical relationships of the central lobe can be useful in preoperative planning and in establishing reliable intraoperative landmarks ¹⁾.

Central lobe tumor

see **Central lobe tumor**.

¹⁾

Frigeri T, Paglioli E, de Oliveira E, Rhoton AL Jr. Microsurgical anatomy of the central lobe. J Neurosurg. 2015 Jan 2;1-16. [Epub ahead of print] PubMed PMID: 25555079.

From:

<https://neurosurgerywiki.com/wiki/> - **Neurosurgery Wiki**

Permanent link:

https://neurosurgerywiki.com/wiki/doku.php?id=central_lobe

Last update: **2024/06/07 02:54**

