

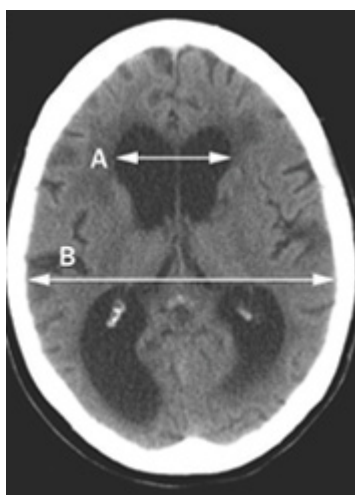
# Biparietal diameter

Biparietal diameter (BPD) is one of the basic biometric parameters used to assess fetal size.

BPD together with [head circumference](#) (HC), abdominal circumference (AC), and femur length (FL) are computed to produce an estimate of fetal weight. In the second trimester this may be extrapolated to an estimate of gestational age and an estimated due date (EDD).

BPD has been shown to be accurate in predicting gestational age from 14 to 20 weeks. The variability increases after this time. BPD may also be influenced by factors such as abnormalities of head shape, breech presentation, or multiple gestations. Head circumference (HC) may be a more reliable measurement if there is variant head shape.

## CT



The [pars marginalis](#) is located slightly posterior to the widest [biparietal diameter](#).

From:

<https://neurosurgerywiki.com/wiki/> - **Neurosurgery Wiki**

Permanent link:

[https://neurosurgerywiki.com/wiki/doku.php?id=biparietal\\_diameter](https://neurosurgerywiki.com/wiki/doku.php?id=biparietal_diameter)

Last update: **2024/06/07 02:52**

